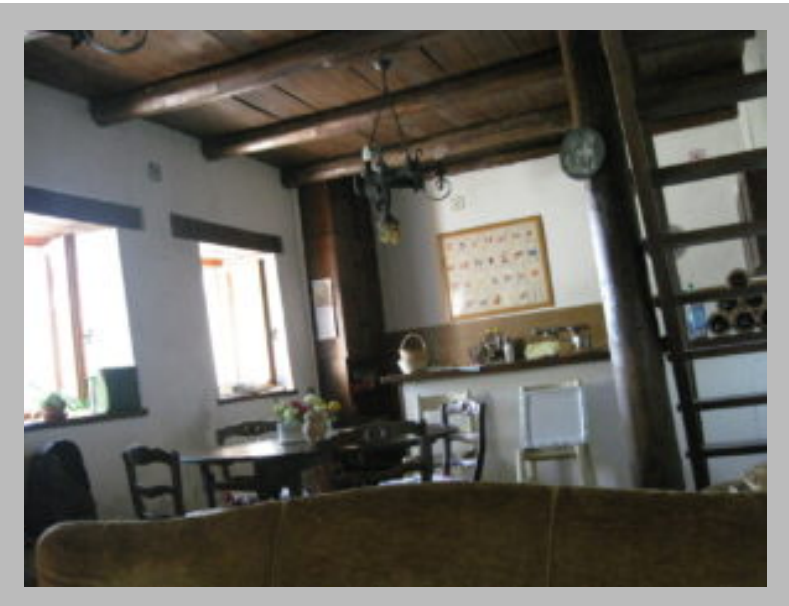
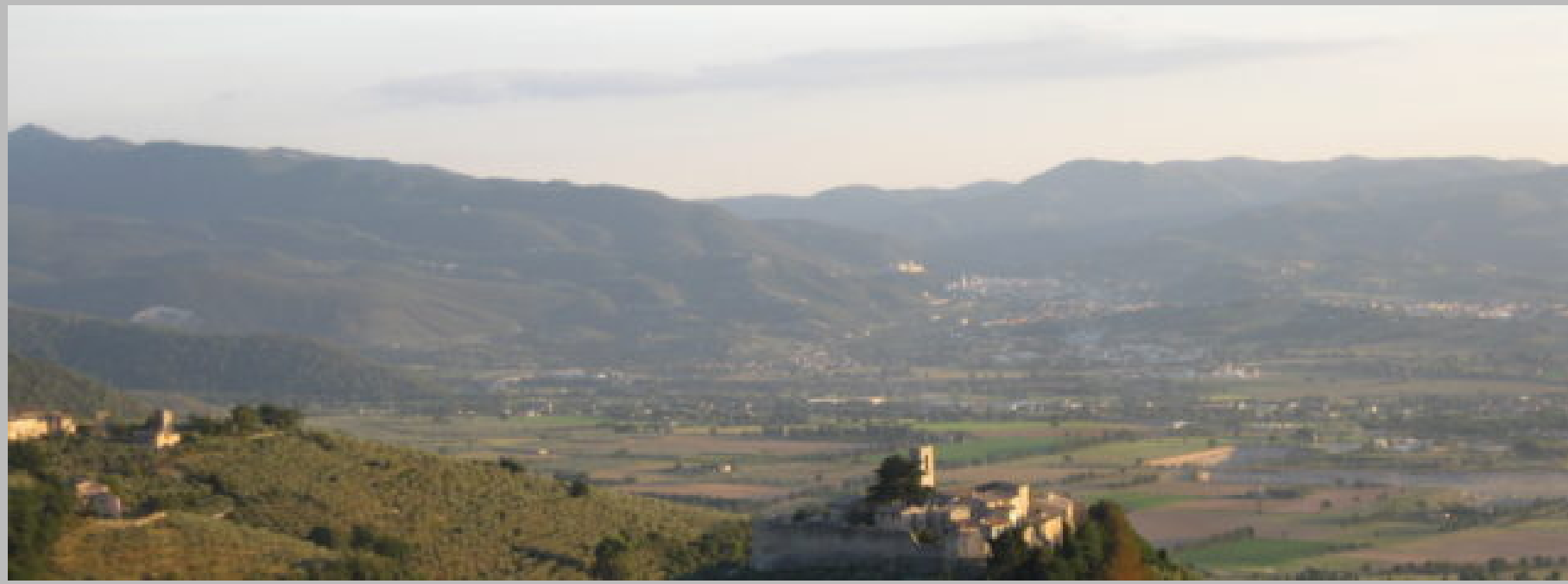




Casa San Silvestro - SOLD



Details

Price : 130.000€

Area : 116 m2

Land : Yes

Pool : No

Location : 06042 Campello Sul Clitunno PG,
Italia, Umbria

Region : Umbria

Bedrooms : 2

Bathrooms : 1

Description

Casa San Silvestro is a restored stone house on 2 stories with breathtaking views situated near Campello sul Clitunno and Spoleto, standing on its own grounds.

From the parking space and up a few steps one can access the main entrance on the ground floor which leads into a spacious living room with fireplace, and a kitchen area; on the first floor there are 2 bedrooms and 1 bathroom, for a total area of approx 90 sq m. Traditional materials such as chestnut beams and terracotta tiles have been preserved throughout the house.

At the back of the top level there is a 26 sq m garage that is accessed from the back; this could be turned into additional living space if necessary.

In front of the house there is a terraced area and a small garden of 306 sq m. An olive grove of 1,440 sq m is included in the sale.

The property is only 10 minutes from the centre of the town of Campello sul Clitunno, among olive groves, overlooking the Spoleto valley, with absolutely breathtaking views over the valley and towards the towns of

Campello and Spoleto, with their beautiful mediaeval castles, and nearby towns are Montefalco, Spello, Assisi and Perugia. It is along the route of the "Via degli Ulivi" (Olive Grove path) and of the hiking path called the Via Francigena.

All facilities and shops and the railway station are in nearby Campello sul Clitunno.